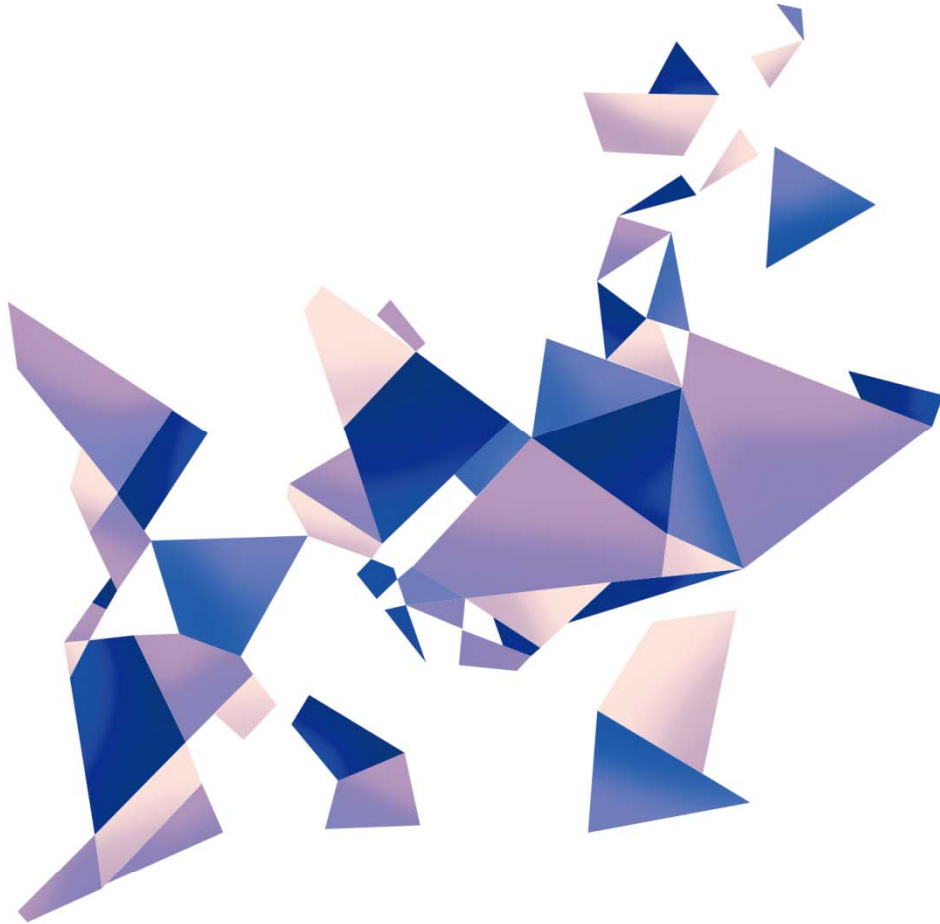


# KP1

## Pandora series

Version: v1.0

Release Date: October 2021



## Specifications



TEL 400 159 0808  
Web: [www.kystar.com.cn](http://www.kystar.com.cn)

**Beijing KYSTAR Technology Co., Ltd.**

Professional Ultra HD Video Display  
Control system integrated solution and service provider

### Version record

version number	Change details	release time
V1.0	first release	2021.10.25

## Pandora Box KP1 Product Specifications

### Overview

KYSTAR Pandora KP1 is a multimedia player that integrate sending card and playback terminal. Compared with the traditional synchronous playback solution, it can reduce the need for a computer playback terminal and is easy to control at any time. It is small in size, powerful in performance, powerful in functions, and more. Large load capacity;

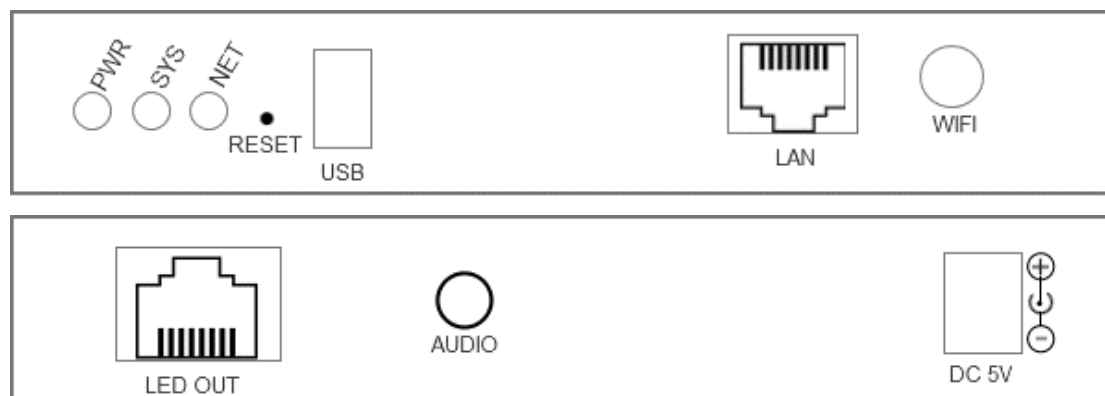
Advertisements on mirror screens, light pole screens, full-color door screens, etc.



### Features

- Gigabit Ethernet port\*1, single network port 650000 pixels, the whole machine carries 650000 pixels, the widest is 3840, the highest is 2000;
- WIFI, Ethernet port, U disk multiple communication methods
- Built-in 8GB (5G available for users), support U disk expansion
- 3.5mm audio output, audio and video synchronous output
- Support multiple windows and multiple materials to play on the screen at the same time
- Supports wireless configuration of the screen through mobile phones and computers without USB cable
- Kystar PE program editing, drag and drop operation, do what you want
- Concise APP for full control of screen adjustment, editing and management,

## Panel description



Name	Function Description
SYS	Running status indicator The system and app start normally, sys is always on; When the player app is abnormal, sys flashes, once per second System upgrade process, sys flashes quickly, 4 times per second
NET	Running status indicator The system and app start normally, sys is always on; When the player app is abnormal, sys flashes, once per second System upgrade process, sys flashes quickly, 4 times per second
PWR	Power indicator, long light indicates normal power supply
RESET	Restore factory settings, always press for 5 seconds to factory
WIFI	Wifi Antenna interface
LEDOUT	Gigabit output network port, connect to all Kystar receiving cards
AUDIO	3.5mm Audio output port
USB	USB2.0 , Update program via U disk
LAN	100M input network port, access to LAN, can be directly connected to PC
5V DC	Provide 5V/2A power supply

## Specifications

External interface type	
Gigabit output network port*1	Output signal to receiving card
Audio output port*1	1/8" (3.5mm)TRS
USB2.0*1	Storage expansion (U disk or SD card, maximum 128G)
100M input network port*1	Access to local area network, cluster control
WIFI antenna*1	WiFi STA+AP Dual mode, can be connected to the router, can be used as a hotspot for mobile phone, computer connection
DC Power input	5V/2A Power input

Performance parameter	
Hardware performance	1.6GH, quad-core CPU, 3D GPU 1GB@600MHz DDR3 high-speed memory Support 1080p@60fps hard decoding playback Support 1080p@30fps hardware encoding
Storage	Built-in 8GB storage (5G available to users)
Load	One lan port load 650,000 pixel,whole machine load 650,000 pixels, the widest is 3840, the highest is 2000
Wifi Connection distance	20m ( Unobstructed )

Support multimedia format	
Video format	AVI, WMV, MPG, RM/RMVB, VOB, MP4, FLV and other common video formats; Supports same time playback of multiple videos
Audio format	MPEG-1 Layer III , AAC etc.
Image Format	Support bmp、jpg、png etc.
Text form	Single line text, static text, multi-line scrolling text, office, etc.
Clock	Real-time clock, multi-regional clock display and management.
OSD	Support 32bit true color OSD, can be displayed in any position, support video/graphics mixing, can superimpose graphics on the video.

Whole machine specification	
Dimensions	153×104×27mm ( L×W×H )
Support receiving card	Kystar all receiving card
Number of loaded receiving cards (single network port)	200 ( Single network port )
Input adapter power	AC 100~240V 50Hz
Working current	2A
Working Voltage	3.8V – 5.5V
Weight	478g
Operating temperature	-20°C -70°C
Working humidity(%)	5%-95%

### Attachment: equipment size chart

